



LonMaker® Turbo Editions New Features

Copyright © 2004 – 2006 Echelon Corporation. All rights reserved. January 2006

New Features

- Visio 2003
- LNS[®] Turbo runtime
- Multiple user support
- Simplified user interface
- Simplified connections
- Improved OEM tool integration
- Improved controller integration
- Improved resynchronization

Visio 2003

- **Tablet PC support**
 - Use digital ink to annotate diagrams
 - Associate shapes with digital ink
 - Convert digital ink to basic geometry or text
- **Enhanced database, engineering, network, software, and Web diagramming tools**
- **Rotate shapes without switching to rotation mode**
- **Select and rotate multiple shapes**
- **Print selected portions of a diagram**
- **Find shapes quickly with shape search**

LNS Turbo Edition Runtime Benefits



- 20% performance improvement
- Database repair tool
- Database backup without shutting down the LNS Server
- Improved scalability—support for larger networks and more users
- Improved LONMARK® support
 - Improved changeable type network variable support
 - Automatic scope determination
 - Support for dynamic functional blocks
 - Enhanced support for device-specific configuration properties
 - Support for invalid values
 - Support for relaxed interface change rules
- Enhanced *i.LON*® 10 and *i.LON* 100 RNI support—improved reliability and ease-of-use
- Enhanced *i.LON* 100 and 600 router support—support for firewalls and up to 256 IP-852 devices
- Support for updated resource files
- Support for copying extension records when copying shapes

Multiple User Support

- **Multiple users can modify a LonMaker network at the same time**
 - Users need not all be online at the same time
- **Every LonMaker tool automatically keeps a change log**
 - Other LonMaker tools on the same network process this log
 - On start-up and while running
 - Users can view the log
 - Logs are also used to recover from computer crashes

Simplified User Interface

- **Simplified wizards with fewer pages and short-cut completion**
 - Create new networks with one click
- **Simplified shortcut menus**
 - Fewer Visio commands
 - Hierarchical menus for faster command selections
- **Automatic device selection for new functional blocks**
 - Speeds network design
- **Automatic channel selection for devices and subsystem master shapes**
- **Simplified dynamic network variable creation**
 - Create with new master shapes or by selecting NV types
- **Plug-ins can be disabled to minimize prompts**
- **Simplified shape alignment**
- **New explorer views**
 - View devices/routers by channel, view devices by template, view NVs by functional block

Simplified Connections

- **Automatic connection-type selection**
 - Reduces common errors when specifying connections
 - Reduces engineering time
 - Increases reliability and reduces required network bandwidth
- **Simplified connector tool—supports multiple connection types:**
 - Network variable to network variable
 - Message tag to message tag
 - Functional block to functional block
 - Functional block to device
 - Device or router to channel
- **Connection hiding**
 - Simplifies drawings by hiding connection shapes
 - User can show/hide connections by functional block
 - Enables connections managed by other applications to be hidden

OEM Tool Integration

- **Export all or part of a LonMaker drawing as an XML file**
 - May be invoked by another LNS application
- **Import new or modified devices, functional blocks, or connections from an XML file**
 - Import may be invoked by another LNS application
 - An OEM application can easily create or modify entire LonMaker drawings
 - OEM applications can present completely customized front-ends to LonMaker
- **Create a report from an XML file**
 - View export or import files using built-in XSLT transformations
 - OEMs can easily create custom reports with custom XSLTs

Improved Controller Integration

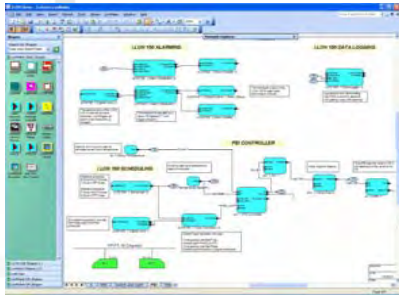
- **Controllers typically have dynamic interfaces**
 - Users typically select which functions are to be implemented on a controller
- **LonMaker supports dynamic functional blocks**
 - Allow the user to create new functional blocks for a device
 - Functional blocks always include mandatory network variables
 - Functional blocks may include optional network variables
 - Network variable shapes may be automatically created

Improved Resynchronization

- **Manual resynchronization will not be necessary as often**
 - More internal links added to enable LonMaker to automatically recover from many errors
- **Resynchronization will be faster**
 - Preliminary testing on a very large customer database showed a 30% performance improvement

LonMaker and LonScanner™ Summary

The standard integration tools for open networks



IP Address	Device Name	Device Type	Manufacturer	Model	Serial Number	MAC Address	Port	Protocol	Status
192.168.1.1	LonWorks	Gateway	LonWorks	1000	123456789	00:00:00:00:00:00	1	LonTalk	OK
192.168.1.2	LonWorks	Controller	LonWorks	2000	987654321	00:00:00:00:00:00	2	LonTalk	OK
192.168.1.3	LonWorks	Device	LonWorks	3000	111111111	00:00:00:00:00:00	3	LonTalk	OK

- Reduce network engineering time
- Reduce network commissioning time
- Reduce network diagnostic time
- Lower network maintenance costs
- Increase options
- Use proven technology
- Get comprehensive training and support