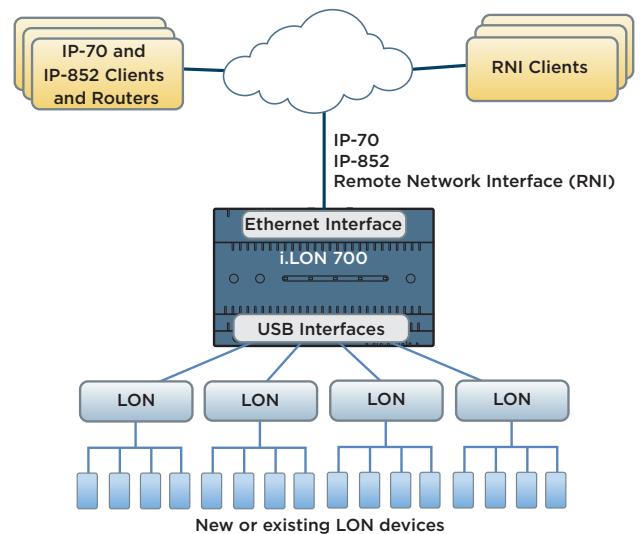


i.LON® 700 Edge Server



i.LON 700 connects LON devices to IP clients and IP devices

Product Description

The i.LON 700 is an ISO/IEC 14908-1, ISO/IEC 14908-4 and ANSI/CTA 709.7 compliant, LON/IP, LON and IP-852 multi-channel router and remote network interface (RNI) for process control, building automation, energy management, transportation systems control and telecommunications equipment management. It provides secure, reliable IP access from Ethernet workstations and servers to everyday devices like pumps, motors, valves, sensors, actuators and lights on LON FT, TP-1250 or PL channels. It also enables installation of tens of thousands of LON FT and TP-1250 devices using an Ethernet backbone. Offering unparalleled packet throughput, multi-channel support, rugged construction, and simple commissioning, the i.LON 700 is ideal for demanding system management and control applications.

LON over IP

When using LON/IP for Ethernet communication, more than 10,000 LON/IP devices can be used on the same channel. When using IP-852 for Ethernet communication, the i.LON 700 is compatible with the i.LON 600 and also with IP-852 routers from other vendors, and any combination of up to 256 IP-852 routers can be used on the same channel.

Features and Benefits

- Multi-channel LON router and RNI for LON/IP-70, IP-852, and up to 8 external LON FT, TP-1250 and PL network interfaces
- Free topology TP/FT-10 channel for the greatest wiring flexibility
- TP/XF-1250 channel for high performance industrial controls and high-speed backbone channels, providing high throughput
- Power line PL-20 channel for communication over existing power lines
- Provides internal LON routers for each attached network interface
- Remote network interface (RNI) for IP connection to an LNS®, OpenLNS® or IzoT® Net Server
- Compatible with IzoT® Net/LNS Installation Tools

Project:

Date:

Detail:

Product Specifications

Hardware and electrical specifications

Processor:	800 MHz ARM Cortex A9
Operating system:	Linux
Clock:	Internal, real time
Built-in memory:	2 GB DDR3L SDRAM 8 GB eMMC flash memory
Memory expansion:	Micro SD card slot
Device support:	Up to 1,000 PL devices, 2,000 total devices; 100,000 datapoints
Input voltage:	10.5-30VDC or 12-30VAC, 50/60Hz Note: Do not use with earth grounded 24VAC input. For proper wiring instructions see hardware user guide at www.echelon.com/docs/iot
Temperature range:	-40°C to +70°C
Surge protection:	EN 61000-4-5:2006, +/- 4KV
Mounting:	DIN 43880 8TE
Shock:	100g or 1000m/s ²
Vibration:	6g or 59m/s ²

Wired interfaces

Gigabit Ethernet interfaces:	1 RJ-45 jack for LAN IP-70 and IP-852
Type A USB 2.0:	4 ports for local IoT network interfaces
Micro-B USB:	1 console port
USB OTG:	1 flash memory port

External interface support

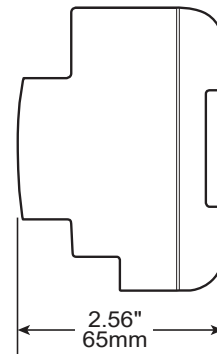
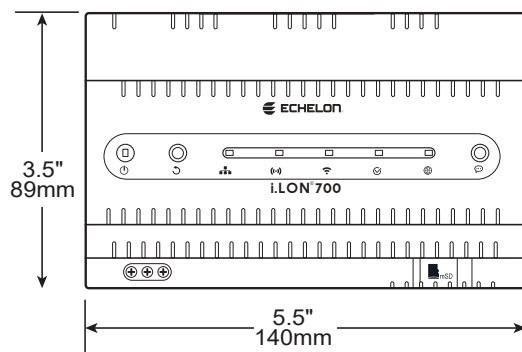
Supports up to 8 optional external interfaces, sold separately:

- 75060R-30 U60 TP-1250 DIN USB Network Interface
- 75060R-40 U60 FT DIN USB Network Interface
- 75070R-70 U70 PL DIN USB Network Interface

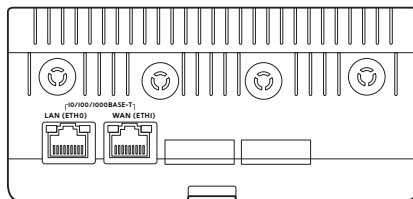
Safety, compliance and warranty

Agency approvals:	FCC, CE, IC, and CCC
EMC:	FCC Part 15 Class B, EN55022 Class B, EN55024, CISPR 24 Class B, CISPR 32 Class B, VCCI Class B
Warranty:	1 year limited warranty

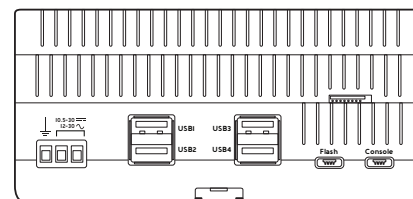
Dimensions, Mounting and Connections



i.LON 700 is designed for DIN-rail mounting



Top: Ethernet jack



Bottom: Power input terminals, USB ports, flash memory, and console interfaces

Model #	Product Name	Product Description
72201R-140	i.LON 700 Edge Server	Multi-channel LON/IP and IP-852 router